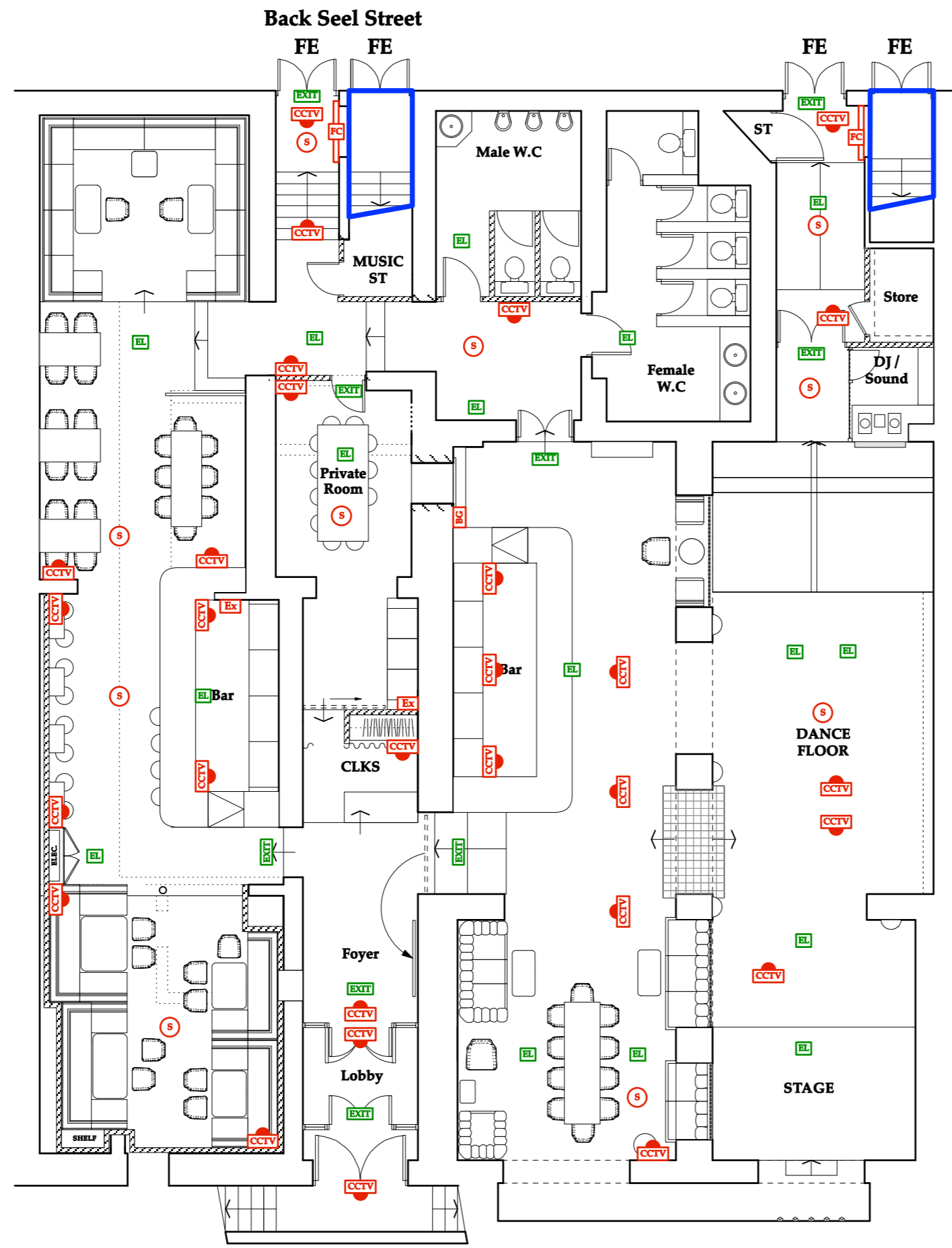


Heebie Jeebies 250a

ARCHITECTURAL EMPORIUM Ltd
EMAIL: mail@architectural-emporium.co.uk
WEB: www.architectural-emporium.co.uk
ADDRESS: 13 Hope St, Liverpool, L1 9BQ
PHONE: +44 (0)151 363 0000



Key:

Area to be Used for Licensable Activities -

Perimeter of the Premises -

Illuminated Exit Sign -

Break Glass Fire Alarm Activation Point -

Fire Extinguisher -

Floodlight Emergency Light Fitting -

Emergency Light Fitting -

Fire Alarm Control Panel -

Heat Detector -

Smoke Detector -

Combined Heat and Smoke Sensor -

CCTV Control Monitor Centre -

Fire Alarm Sounder -

CCTV Camera (Dome) -

Fire Blanket -

60min Fire Curtain -

	EXIT
	BG
	Ex
	(F)EL
	EL
	FP
	H
	S
	H-Sm
	CCTV CTRL
	Sd
	CCTV
	FB
	FC

Notes:

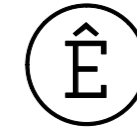
1. A written fire risk assessment is to be carried out by the operator prior to opening.
2. Fire procedure notices are to be provided and sited adjacent fire alarm call points.
3. All fire alarm, emergency lighting, fire fighting equipment and signage to conform to the relevant British Standards.
4. All Fire exit doors to be readily operable without requiring the use of a key.
5. (Location of Fire Fighting and other Safety equipment as shown, or as agreed from time to time with the Fire Authority).

FOR: INFORMATION
 CHECKED BY: AJ | DRAWN BY: TW
 SCALE: 1:100
 PAPER SIZE: A3
 JOB: HEEBIE JEEBIES 250a

5.099_Rev A

FIRST ISSUE: 07.04.16

BASEMENT FLOOR LICENSE PLAN



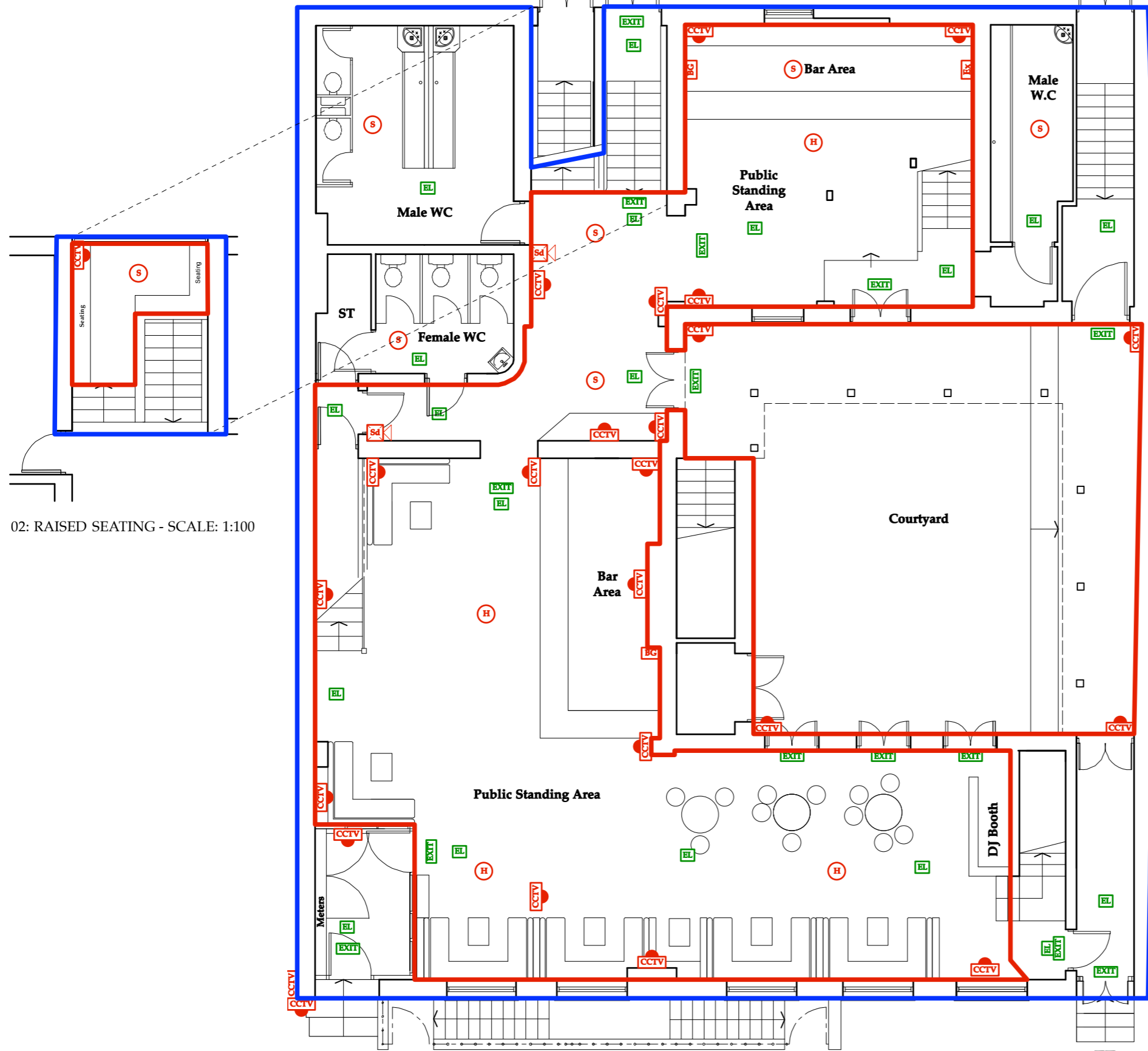
Heebie Jeebies 250a

ARCHITECTURAL EMPORIUM Ltd
EMAIL: mail@architectural-emporium.co.uk
WEB: www.architectural-emporium.co.uk
ADDRESS: 13 Hope St, Liverpool, L1 9BQ
PHONE: +44 (0)151 363 0000

Back Seel Street

FE FE

FE



02: RAISED SEATING - SCALE: 1:100

01: PROPOSED GROUND FLOOR LICENSE PLAN - SCALE: 1:100

Seel Street

Key:

Area to be Used for Licensable Activities -

Perimeter of the Premises -

Illuminated Exit Sign -

Break Glass Fire Alarm Activation Point -

Fire Extinguisher -

Floodlight Emergency Light Fitting -

Emergency Light Fitting -

Fire Alarm Control Panel -

Heat Detector -

Smoke Detector -

Combined Heat and Smoke Sensor -

CCTV Control Monitor Centre -

Fire Alarm Sounder -

CCTV Camera (Dome) -

Fire Blanket -

60min Fire Curtain -

Area to be Used for Licensable Activities -	
Perimeter of the Premises -	
Illuminated Exit Sign -	
Break Glass Fire Alarm Activation Point -	
Fire Extinguisher -	
Floodlight Emergency Light Fitting -	
Emergency Light Fitting -	
Fire Alarm Control Panel -	
Heat Detector -	
Smoke Detector -	
Combined Heat and Smoke Sensor -	
CCTV Control Monitor Centre -	
Fire Alarm Sounder -	
CCTV Camera (Dome) -	
Fire Blanket -	
60min Fire Curtain -	

Notes:

1. A written fire risk assessment is to be carried out by the operator prior to opening.
2. Fire procedure notices are to be provided and sited adjacent fire alarm call points.
3. All fire alarm, emergency lighting, fire fighting equipment and signage to conform to the relevant British Standards.
4. All Fire exit doors to be readily operable without requiring the use of a key.
5. (Location of Fire Fighting and other Safety equipment as shown, or as agreed from time to time with the Fire Authority).

FOR: INFORMATION

CHECKED BY: AJ | DRAWN BY: TW

SCALE: 1:100

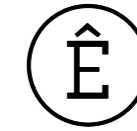
PAPER SIZE: A3

JOB: HEEBIE JEEBIES 250a

5.100_Rev A

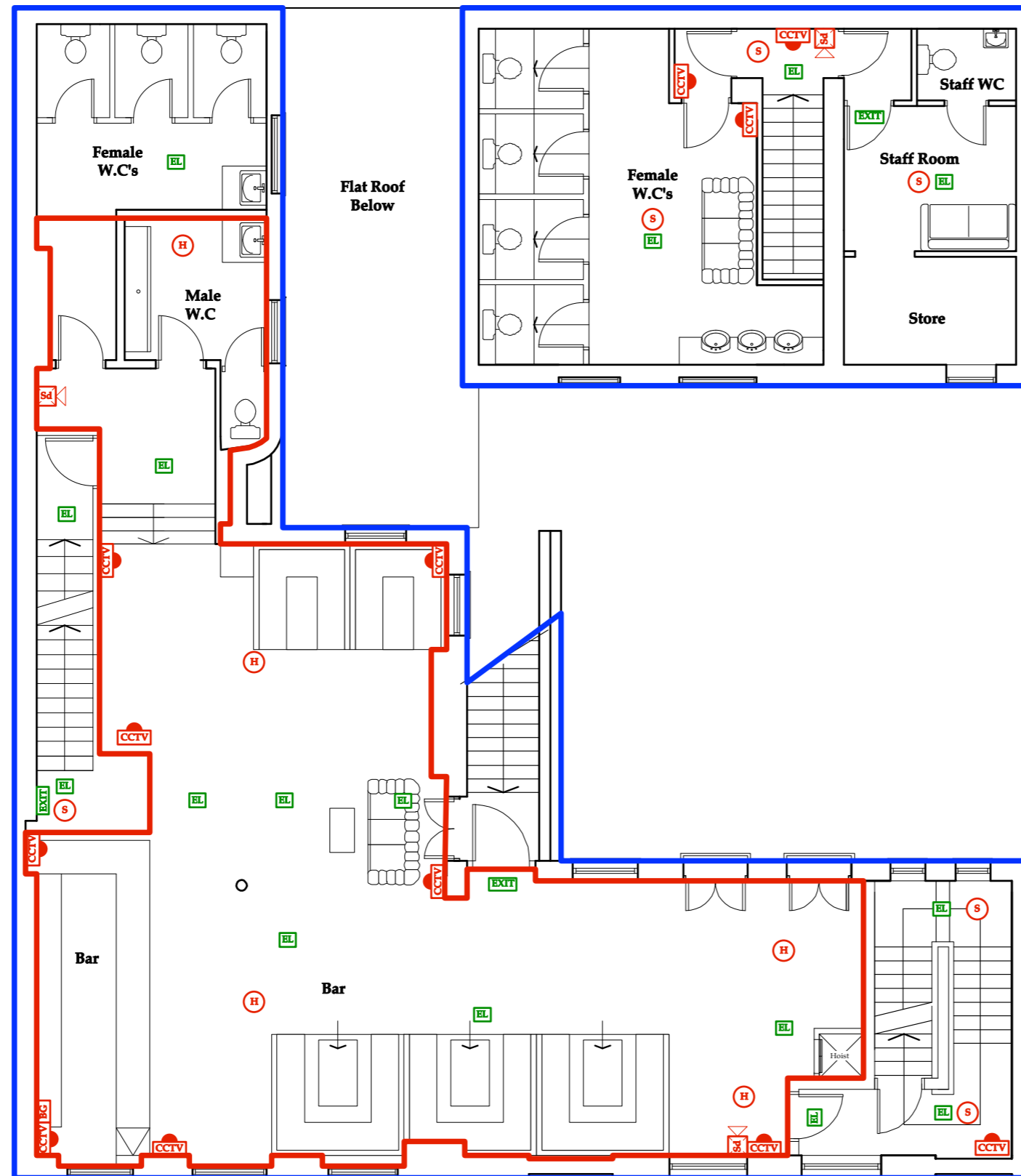
FIRST ISSUE: 19.05.16

GROUND FLOOR LICENSE PLAN



Heebie Jeebies 250a

ARCHITECTURAL EMPORIUM Ltd
EMAIL: mail@architectural-emporium.co.uk
WEB: www.architectural-emporium.co.uk
ADDRESS: 13 Hope St, Liverpool, L1 9BQ
PHONE: +44 (0)151 363 0000



Key:

Area to be Used for Licensable Activities -

Perimeter of the Premises -

Illuminated Exit Sign -

Break Glass Fire Alarm Activation Point -

Fire Extinguisher -

Floodlight Emergency Light Fitting -

Emergency Light Fitting -

Fire Alarm Control Panel -

Heat Detector -

Smoke Detector -

Combined Heat and Smoke Sensor -

CCTV Control Monitor Centre -

Fire Alarm Sounder -

CCTV Camera (Dome) -

Fire Blanket -

60min Fire Curtain -

	EXIT
	BG
	Ex
	(F)EL
	EL
	FP
	H
	S
	H+S
	CCTV
	SD
	CCTV
	FB
	FC

Notes:

1. A written fire risk assessment is to be carried out by the operator prior to opening.
2. Fire procedure notices are to be provided and sited adjacent fire alarm call points.
3. All fire alarm, emergency lighting, fire fighting equipment and signage to conform to the relevant British Standards.
4. All Fire exit doors to be readily operable without requiring the use of a key.
5. (Location of Fire Fighting and other Safety equipment as shown, or as agreed from time to time with the Fire Authority).

FOR: INFORMATION

CHECKED BY: AJ | DRAWN BY: TW

SCALE: 1:100

PAPER SIZE: A3

JOB: HEEBIE JEEBIES 250a

5.101_Rev A

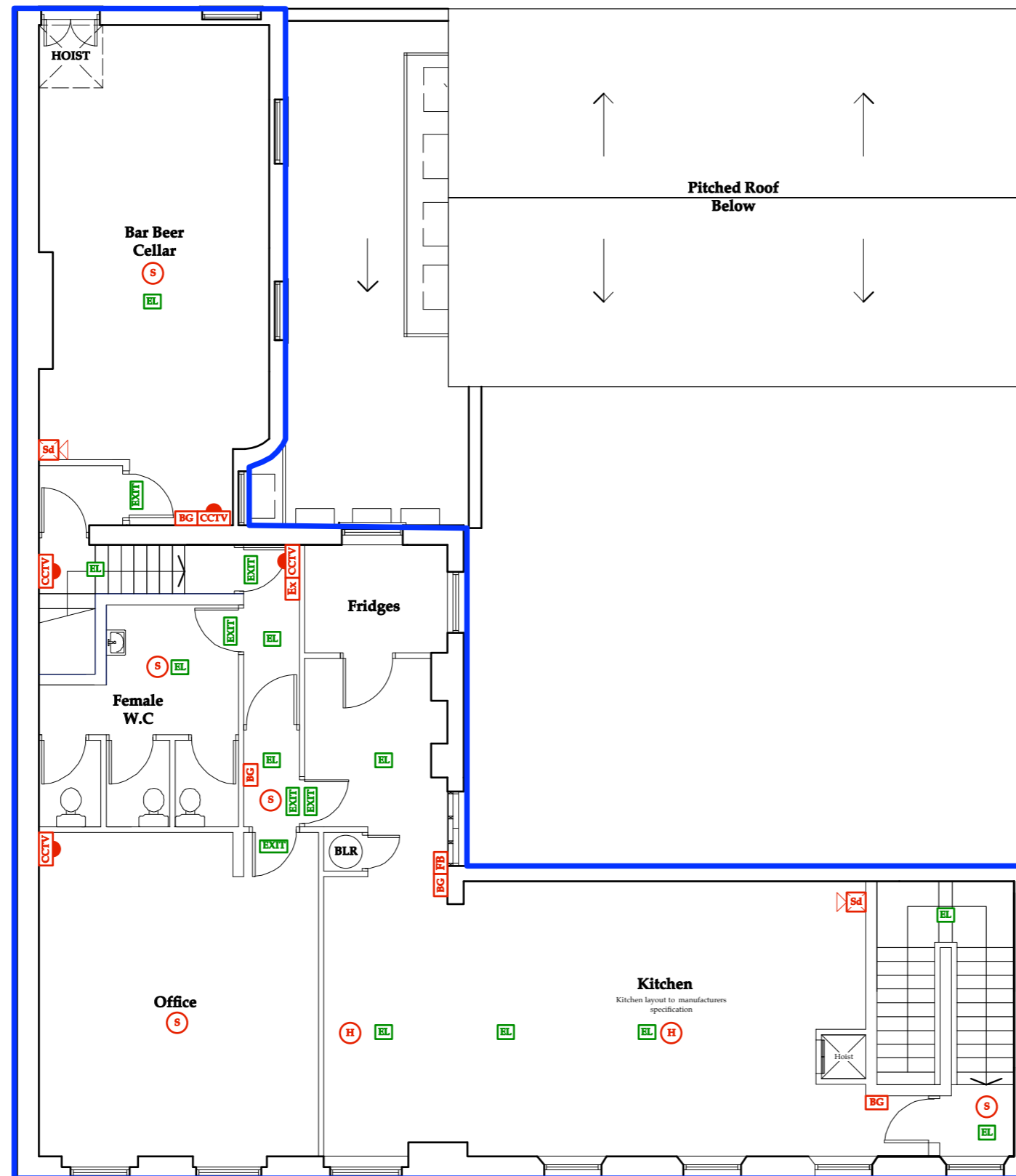
FIRST ISSUE: 19.05.16

FIRST FLOOR LICENSE PLAN



Heebie Jeebies 250a

ARCHITECTURAL EMPORIUM Ltd
EMAIL: mail@architectural-emporium.co.uk
WEB: www.architectural-emporium.co.uk
ADDRESS: 13 Hope St, Liverpool, L1 9BQ
PHONE: +44 (0)151 363 0000



Second Floor Plan
Scale 1:50

Key:

Area to be Used for Licensable Activities -

Perimeter of the Premises -

Illuminated Exit Sign -



Break Glass Fire Alarm Activation Point -



Fire Extinguisher -



Floodlight Emergency Light Fitting -



Emergency Light Fitting -



Fire Alarm Control Panel -



Heat Detector -



Smoke Detector -



Combined Heat and Smoke Sensor -



CCTV Control Monitor Centre -



Fire Alarm Sounder -



CCTV Camera (Dome) -



Fire Blanket -



60min Fire Curtain -



Notes:

1. A written fire risk assessment is to be carried out by the operator prior to opening.
2. Fire procedure notices are to be provided and sited adjacent fire alarm call points.
3. All fire alarm, emergency lighting, fire fighting equipment and signage to conform to the relevant British Standards.
4. All Fire exit doors to be readily operable without requiring the use of a key.
5. (Location of Fire Fighting and other Safety equipment as shown, or as agreed from time to time with the Fire Authority).

FOR: INFORMATION

CHECKED BY: AJ | DRAWN BY: TW

SCALE: 1:100

PAPER SIZE: A3

JOB: HEEBIE JEEBIES 250a

5.102_Rev A

FIRST ISSUE: 19.05.16

SECOND FLOOR LICENSE PLAN